



2020

MARINE ELECTRONICS FOR FISHING



**Raymarine**



# WELCOME TO THE WORLD OF RAYMARINE

Raymarine products are engineered to deliver the very best in visual navigation information and with a legacy of marine technology spanning over 80 years, we are renowned today for ease-of-use, rugged design, and reliability.

At Raymarine, we are constantly innovating to deliver high-performance sensors and intelligent navigation systems so your time on the water is stress-free and fun. We are committed to you with an industry-leading warranty and worldwide service network. Whether you fish, sail, or cruise you can get underway with the confidence of Raymarine on board.

## Contents

- 4 MFD Overview
- 6 Element
- 8 Sonar Technology
- 10 LightHouse 3
- 16 Axiom
- 18 Axiom Pro
- 20 Axiom XL
- 22 Charts & Mobile
- 24 Radar
- 28 FLIR Thermal
- 30 Docksense
- 32 Autopilots
- 34 Accessories
- 36 Product Dimensions





## MULTIFUNCTION DISPLAYS AND SONAR/GPS

Raymarine navigation displays put you in command with the speed and simplicity of our LightHouse operating systems. To keep you in the game, Raymarine MFDs and sonar/GPS displays use wide-spectrum CHIRP sonar technology for unrivalled imagery and fish targeting. Our Dragonfly and Element series offer premium performance for every angler, and our award-winning Axiom® line brings the full power of Raymarine multifunction navigation into a single touch display or networked system.

AXIOM XL

AXIOM

AXIOM PRO

ELEMENT

### Element Sonar/GPS Displays

Element combines lifelike HyperVision™ sonar imaging with quad core speed and the simplicity of the LightHouse Sport OS.

#### Display Options

Element 7	7.0" (800 x 480)
Element 9	9.0" (800 x 480)
Element 12	12.1" (1280 x 800)

### Axiom Touchscreen MFDs

Award winning Axiom displays feature RealVision® 3D sonar, powerful expansion capabilities, and intuitive LightHouse 3 OS touch screen control.

#### Display Options

Axiom 7	7.0" (800 x 480)
Axiom 9	9.0" (800 x 480)
Axiom 12	12.1" (1280 x 800)

### Axiom Pro HybridTouch MFDs

Axiom Pro is the MFD for captains that want it all. HybridTouch™ control, 1kW sonar, RealVision 3D and the power of LightHouse 3 OS.

#### Display Options

Axiom Pro 9	9.0" (1280 x 720)
Axiom Pro 12	12.1" (1280 x 800)
Axiom Pro 16	15.6" (1920 x 1080)

### Axiom XL Glass Bridge MFDs

Experience the simplicity and power of LightHouse 3 on the big screen. Flagship glass bridge displays, ready for offshore adventure.

#### Display Options

Axiom XL 16	15.6" (1920 x 1080)
Axiom XL 19	18.5" (1920 x 1080)
Axiom XL 22	21.5" (1920 x 1080)
Axiom XL 24	24.0" (1920 x 1200)



## ELEMENT SONAR/GPS WITH HYPERVISION

Built for anglers that want to be one step ahead of the game, Element delivers the sharpest view of the underwater world with HyperVision™ 1.2 megahertz super high-resolution sonar. HyperVision takes DownVision, SideVision, and Raymarine RealVision 3D sonar to the next level of precision imaging and fish identification, letting you see structures, vegetation, and fish with lifelike clarity.



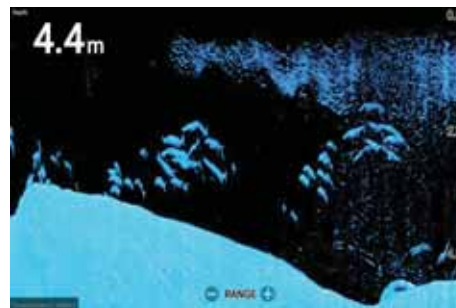
### Simple, Fast Operation

Element's LightHouse Sport operating system delivers a simplified user experience with intuitive keypad control. Quickly mark fishing spots and access your favourite pages with the press of a button. Quad-core performance delivers instant chart redraw, smooth 3D imaging, and fast response while on the water.



### All-in-One Transducer

The compact HV-100 transducer is simple to install and supports RealVision 3D, DownVision, SideVision, high-frequency CHIRP and 1.2 MHz HyperVision. A high precision water temperature sensor is standard, and the HV-100 is convertible for transom or trolling motor mounting. Through-hull versions are also available.



### See More with Precision Sonar

Element's 1.2 megahertz HyperVision™ takes sonar to a new level of precision. DownVision, SideVision, or stunning RealVision 3D, Element's HyperVision™ mode lets you view structure and target fish with lifelike clarity, helping you to see and catch what other anglers can't.



### All the Best Maps

Element's powerful chartplotter supports vector and raster electronic charts from LightHouse NC2, Navionics, C-MAP, Standard Mapping, CMOR Mapping, and many other publishers. Make custom bathymetric maps on the fly using Navionics SonarChart Live or Raymarine's new RealBathy™ real-time map generator.



# RAYMARINE SONAR TECHNOLOGY

Whether your passion is freshwater, inshore or offshore big game adventures, Raymarine sonar technology gives you the power to locate fish and detect structure with exceptional clarity and ease-of-use. From a weekend angler to tournament professional, we offer a wide range of multifunction navigation displays with integrated sonar and high-performance external sonar modules that let you spend more time catching fish and less time looking for them.

	Technology						
	Digital	CHIRP	DownVision	SideVision	RealVision 3D	HyperVision	1kw or higher
Axiom	●	●	●	●	●		
Axiom Pro	●	●	●	●	●		●
Axiom XL with RVX1000	●	●	●	●	●		●
Element		●	●	●	●	●	
CP100 Sonar Module		●	●				
CP200 Sonar Module		●		●			
CP370 Sonar Module	●						●
CP470 Sonar Module		●					●
CP570 Sonar Module		●					●
RVX1000 Sonar Module	●	●	●	●	●		●

**Note:** Axiom and Axiom Pro models are available with DownVision, SideVision and CHIRP sonar built-in. Axiom XL requires an external module.

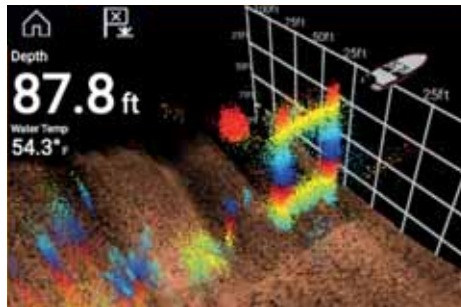
## CHIRP DownVision

CHIRP DownVision® delivers a photo-like view of the world beneath your boat, allowing you to image bottom structures with amazing detail and simultaneously target fish.



## CHIRP SideVision

CHIRP SideVision® sonar expands your underwater horizon with bank-to-bank displays of fish, bait and underwater structures. SideVision lets you see further, see more clearly, and detect more fish than traditional side scanning sonars.



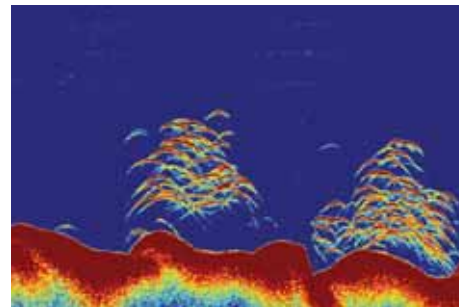
## RealVision 3D

RealVision™ 3D give anglers the ability to see what's below, behind, and to the sides of the boat, all at once and in three-dimensions. RealVision 3D displays the entire underwater world—including structure, cover, fish and forage. Pan, tilt, and zoom the 3D image to examine from any angle.



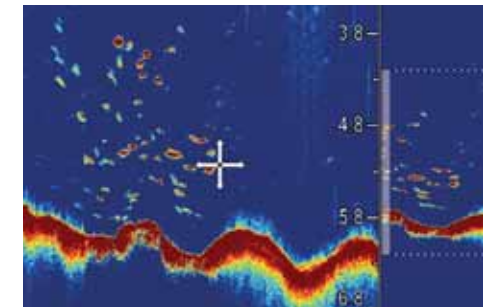
## HyperVision

Using the ultra-high 1.2 MHz CHIRP sonar frequency range, HyperVision™ takes DownVision, SideVision, and Raymarine RealVision 3D sonar to the next level of precision imaging and fish identification, letting you see structures, vegetation, and fish with lifelike clarity.



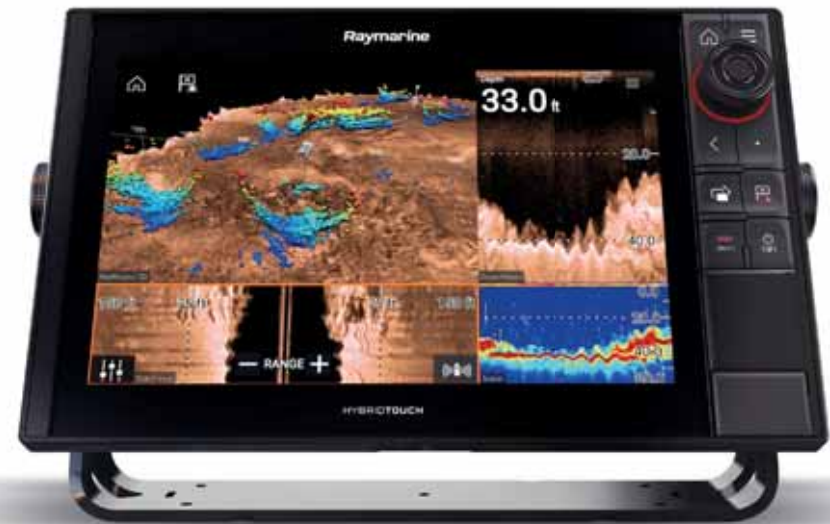
## Conventional CHIRP Sonar

With 10 times the resolution of ordinary sonars, Raymarine wide spectrum CHIRP sonar delivers sharper, more defined fish targets and automatically filters out unwanted noise so you never miss the action below.



## Digital Sonar

Digital Sonar operates at 200kHz for inshore and 50kHz for offshore-fishing. ClearPulse™ signal processing intelligently manages the sonar parameters in all conditions so anglers can spend more time fishing and less time adjusting the sonar.





## **LIGHTHOUSE 3**

### OPERATING SYSTEM POWERFUL AND INTUITIVE

The easy-to-use operating system inside every Raymarine Axiom multifunction display, LightHouse™ puts you in command with a fluid touch-screen or HybridTouch™ user experience. LightHouse lets you navigate with the best charts and makes navigating as simple as using a smartphone.



### You Are in Command

LightHouse 3 is fast, fluid, and easy to learn. The uncluttered interface is easily personalized for your style of navigating. Get underway with smartphone-like touchscreen experience or take command with HybridTouch keypad and touchscreen control combined.



### Expandable

Expand any LightHouse 3 OS based display with powerful sensors, including Quantum radar, CHIRP sonar modules, and FLIR thermal night vision cameras. SeaTalk<sup>NG</sup> and NMEA 2000 connectivity enable engines displays, instruments, and Evolution autopilot integration. Standard Wi-Fi and Bluetooth allows connection to Raymarine apps, accessories and more.



### Simplified Networking

Axiom, Axiom Pro and Axiom XL all run the LightHouse 3 operating system, allowing you to create a navigation system with any Axiom display combination. Connect up to 10 Axiom displays or integrate with eS and gS Series by upgrading to LightHouse 3 for free.



### Beautiful Data

Drag and drop databoxes anywhere on screen. Choose from 4 different size options and up to 14 different data types. Simply swipe the side of the display to reveal the Side Bar data display or launch the Dashboard app for intuitive instrument and engine data displays.



## LIGHTHOUSE 3 OPERATING SYSTEM POWERFUL AND INTUITIVE

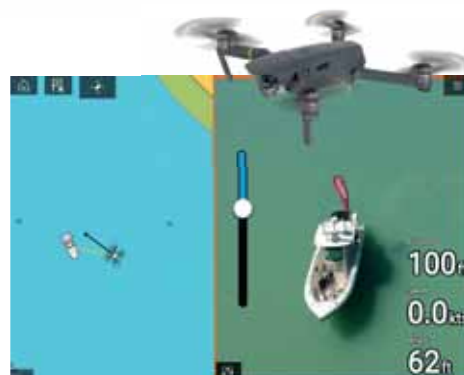
The LightHouse 3 operating system powers Axiom, Axiom Pro, and Axiom XL multifunction displays. Previous generation Raymarine eS Series and gS Series can also upgrade to LightHouse 3 for free. Some advanced LightHouse 3 features like ClearCruise AR, Axiom UAV, and LightHouse Apps are exclusive to Axiom multifunction displays. Visit [raymarine.eu/lighthouse](https://raymarine.eu/lighthouse) to learn more and stay abreast of the latest LightHouse 3 feature updates.





### Personalisation

The LightHouse 3 home screen offers bold and simple app icons. Customise the home screen with your favourite apps. LightHouse 3 User Profiles saves yours and other crew member's personal home screens and configuration preferences.



### Axiom UAV – Your Eye in the Sky

Experience the power of aerial imaging on-board with Axiom and the DJI Mavic Pro drone. LightHouse 3 offers a seamless UAV control experience with convenient touch-to-fly options and automatic return to boat capabilities. Free your drone's video from your tiny smartphone with Axiom's large, sunlight viewable display.



### Augmented Reality

ClearCruise AR brings enhanced on-water perception to the Axiom line. HD video overlaid with dynamic graphics delivers instant recognition of navigation aids, AIS contacts, and nearby waypoints. Augmented reality makes it easy to understand complex navigation situations and make smarter decisions on the water.



### LightHouse Apps:

LightHouse Apps is Raymarine's expanding library of applications for Axiom multifunction displays. Enjoy entertainment apps like Netflix and Spotify or connect with on-board systems like Lumishore vessel lighting and Seakeeper gyro systems. LightHouse apps also keep you connected with support for Mazu satellite communications and Their weather.

# TAKE FLIGHT WITH **AXIOM UAV** INTEGRATION

Every boater has wished for a birds-eye view of their surroundings at some time. That wish has finally been granted with Raymarine's Axiom UAV application that brings together the power of advanced marine electronics and advanced Unmanned Aerial Vehicles (UAVs.)

Compatible with the popular and highly capable DJI Mavic Pro drone, the Axiom UAV app automates many common tasks including launch, airborne imaging, in-flight navigation, and return-to boat. Fishing and cruising boats alike can greatly benefit from having this added aerial imaging platform integrated onboard their Axiom navigation display.



# CLEARCRUISE AR AUGMENTED REALITY

ClearCruise™ AR is bringing enhanced on water perception to Raymarine's family of Axiom® multifunction displays.



Award Winning Navigation Technology



## Make Smarter Decisions

See critical navigation objects overlaid on HD video. Surrounding AIS-equipped vessel traffic and charted navigation aids are clearly identified with rich graphics on a live, dynamic video image.



## Recognise and Respond to Nearby Marine Traffic

Colour-coded labels provide instant identification, status, and risk-assessment Live AIS Targets. ClearCruise AR provides positive identification of AIS equipped vessels on the horizon.



## Understand Complex Navigational Situations

Major chart objects are identified for instant, heads-up recognition. ClearCruise AR technology shows you visually where your saved waypoints and marks are located.



## See Waypoints in the Real World

Visualize nearby marks and waypoints for easy navigation. ClearCruise AR technology makes it easy to pick out the buoys marking the edges of the safe channel on a hazy day.



## **AXIOM** TOUCHSCREEN MULTIFUNCTION DISPLAYS

Axiom is expandable, so its capabilities can grow, as needed. It supports the full range of Raymarine accessories, including Quantum radar, CHIRP Sonar, FLIR thermal cameras, audio integration, instruments, cameras, and Evolution autopilot. Standard Wi-Fi and Bluetooth connectivity allows connection to the latest Raymarine apps for tablets and smartphones.



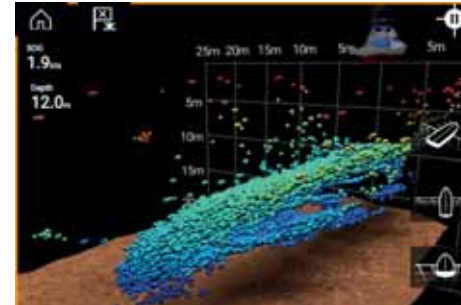
### Award Winning Performance

Axiom's intuitive LightHouse 3 operating system, quad-core performance, and innovative technologies like ClearCruise Augmented Reality, Quantum Doppler radar, and RealVision 3D have earned Axiom multiple prestigious industry innovation awards.



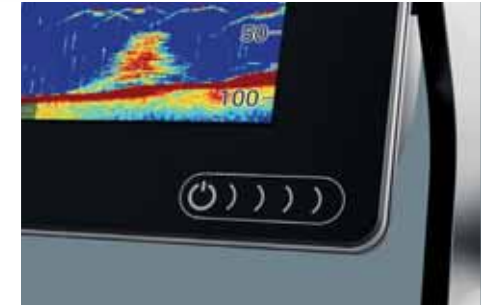
### Expandable

Connect Axiom with Quantum radar, FLIR M232 cameras, instruments, Evolution autopilots and much more. Wi-Fi and Bluetooth connect you to the latest Raymarine LightHouse Apps and entertainment. Axiom also networks seamlessly with Axiom Pro and Axiom XL displays so you can build a custom Raymarine navigation system that fits your needs.



### All-in-one RealVision 3D Sonar

See the underwater world in an entirely new way with Axiom's CHIRP DownVision, SideVision, and RealVision® 3D sonar. Experience incredible 3D imagery using GPS and gyro-stabilisation to compensate for boat movement and deliver life-like 3D representation. Axiom also supports high-frequency CHIRP and 600-watt, dual-frequency digital sonar.



### Rugged All Glass Display

Axiom is available in 7, 9 or 12-inch sizes to fit any vessel. Axiom's rugged all-glass display is optimized for flush or surfacing mounting and looks great on any helm. Raymarine's super-bright LED display technology with optical bonding delivers superior visibility day or night.



## **AXIOM PRO** HYBRIDTOUCH MULTIFUNCTION DISPLAYS

Axiom Pro is engineered for captains that want it all. Available with RealVision 3D, 1kW CHIRP sonar, and Raymarine HybridTouch control, Axiom Pro is the new standard for “all-in-one” displays. And with a blazing fast quad-core processor, super bright IPS display, and the smart LightHouse OS, Axiom Pro delivers a fluid and intuitive navigation experience.



### HybridTouch

Axiom Pro puts you in control with its intuitive HybridTouch control system. A responsive multi-touch touchscreen display provides Smartphone-simple operation, while an integrated rotary controller, cursor pad, and keypad give you confident control when seas get rough.



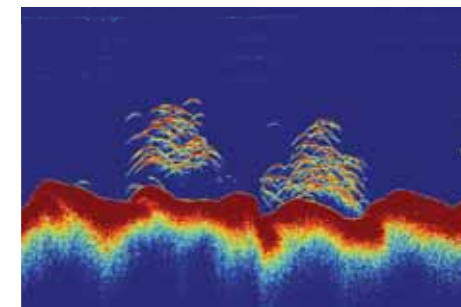
### Rugged and Bright

Axiom Pro employs In-Plane Switching (IPS) display technology for ultra-wide viewing angles, superior colour, and excellent compatibility with polarized lenses. See every detail above and below the water line in stunning high definition with Axiom Pro's super bright, optically bonded displays.



### Fish Like a Pro

Available in 9, 12 and 16-inch sizes, Axiom Pro is at home on premium offshore sport-fish boats, and advanced networking lets you integrate Quantum and Magnum radars, FLIR cameras, and Evolution autopilots. Mix and match any combination of Axiom, Axiom Pro, and Axiom XL for even greater flexibility when outfitting towers, fly bridges, and other locations on board.



### Offshore and Inshore Ready Sonar

Axiom Pro is ready to fish anywhere with built-in RealVision 3D, DownVision, and SideVision sonar for photo-like imaging of fish and structures. Axiom Pro also delivers professional-grade deep water performance with an integrated 1kW offshore CHIRP sonar.



## **AXIOM XL** FLAGSHIP GLASS BRIDGE MULTIFUNCTION DISPLAYS

Designed for glass bridge installations, Axiom XL displays offer superior performance, large format visibility and elegant simplicity. Engineered to perform in extreme conditions, the fully waterproof Axiom XL family of glass bridge MFDS can be installed in both open cockpits and enclosed bridge stations. Each model uses in-plane switching technology (IPS) and Raymarine optical bonding to deliver wider viewing angles, sharp contrast, and unmatched readability in bright sun.



### Flagship Performance

Axiom XL is Raymarine's largest and highest-performing family of multifunction navigation displays. Choose from 16, 19, 22 or 24-inch sizes with all-glass construction and full-HD displays. Axiom XL is right at home on the helms of luxury sport-fishing yachts and high-performance centre consoles.



### Advanced Video Integration

Axiom XL is the pinnacle of video and system integration. View and control a remote personal computer right from the helm with Axiom XL's HDMI input and USB touchscreen control or project Axiom XL to a remote monitor with HDMI output. Three power over Ethernet (POE) ports enable simple connectivity of IP cameras for security and ClearCruise Augmented Reality navigation.



### Elegant Simplicity

Axiom XL displays are powered by Raymarine's LightHouse 3 OS and offer a fast, fluid, and uncluttered interface that is easily personalised for your navigation style. Enjoy multi-touch screen control or add the Raymarine RMK-10 keypad for complete remote system control.



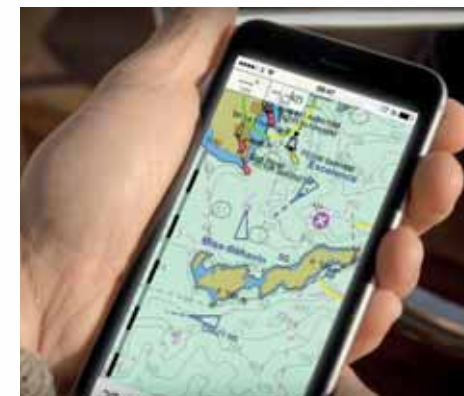
### Powerful Sonar Options

Axiom XL is compatible with Raymarine's premium sonar modules like the RVX-1000 3D CHIRP Sonar Module and the CP570 Professional CHIRP Sonar. No matter what sonar you're viewing, Axiom XL's full high-definition displays ensure you see it with stunning detail and high-definition clarity.



## CHARTS AND MOBILE: A GUIDE TO FEATURES

Raymarine navigation displays give you the power to explore, plan, and navigate the open water, with confidence. High definition displays and quad-core performance bring electronic charts from leading map makers to life. Enjoy fully-featured vector charts, high-quality raster charts, plus advanced features like 3D maps, satellite overlays, and automatic routing options.



## Raymarine LightHouse Charts

Raymarine LightHouse Charts are a library of raster and vector digital map products from Raymarine and leading map makers like IMRAY, Delius Klasing and Solteknik HB. Visit [raymarine.com/MarineCharts](http://raymarine.com/MarineCharts) to explore the complete library LightHouse Chart options.



## C-MAP Charts

C-MAP, a leader in professional and leisure digital nautical charts, is world renowned for accurate and easy to understand chart products, including C-MAP Essentials and 4D-MAX+ premium marine charts. Enjoy advanced features like 3D view, satellite overlay, and raster chart support.

Explore the complete C-MAP chart offering at [c-map.com](http://c-map.com).



## Navionics Charts

Navionics charts are the essential cartographic reference for boaters worldwide with accurate and thorough maps of oceans, lakes and marine areas. Create your own maps with SonarChart live, sync your waypoints and routes with the Navionics Boating App or get to your next destination with Dock-to-dock auto-routing.

Ask your Raymarine dealer about purchasing Navionics bundled with an Axiom, Element or Dragonfly.



## SeaPilot

Now part of the Raymarine family, the Seapilot mobile app combines professional grade navigation features with a simple and uncluttered user experience. A full-featured navigation app, Seapilot offers waypoint and route planning and navigation, AIS overlays, GRIB weather and advanced auto routing.

Try Seapilot today. Available on iOS at the Apple App store and for Android on Google Play store.



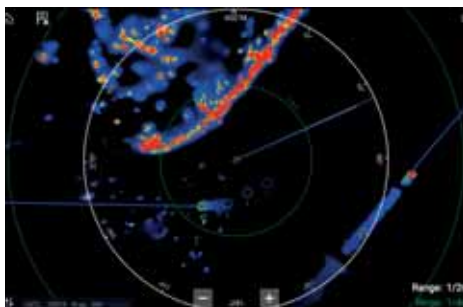


## MARINE RADAR ANTENNAS

Day and night, radar systems from Raymarine keep you aware of surrounding traffic, hazards and obstacles, approaching weather and more. Use radar to navigate in dense fog and rain or use MARPA (mini automatic radar plotting aid) target tracking to help you navigate safely through a crowded harbour or busy waterway. Raymarine offers a wide range of radar solutions for all types and sizes of boats.

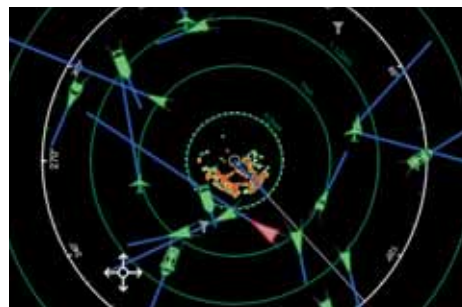
## Quantum Radars

Raymarine Quantum™ radar, with CHIRP pulse compression technology, offers superior radar imaging, low power solid-state radar performance, and simple installation. Choose the basic Quantum for reliable solid-state radar performance or step up to Quantum 2 with Doppler enhanced target identification.



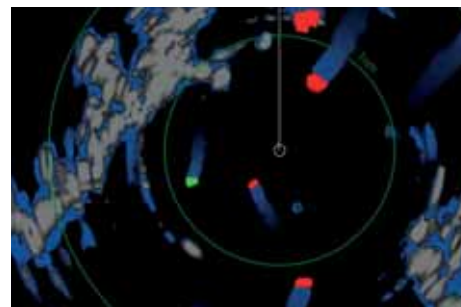
## Compact Performance

Quantum radars use solid-state CHIRP pulse compression technology to deliver superior target awareness at both long and extremely short ranges. FLIR's exclusive ATX™ advanced target separation technology displays targets like boats, buoys, and landmarks with exceptional resolution and separation quality.



## Energy Efficient

Quantum radar's solid-state technology consumes very little power, making Quantum especially friendly to vessels running on battery power. Solid-state radar technology also generates very low radiated emissions.



## Quantum 2 with Doppler

Quantum 2 with Doppler elevates your awareness by detecting radar frequency shifts returned by moving versus stationary targets. Quantum 2 then colour codes inbound targets red (dangerous) and outbound targets green (safe), making it easy to discern potentially hazardous situations when navigating in high-traffic areas.



## Simple Installation

With every Raymarine Quantum system, you'll also benefit from a rugged and lightweight design that is easy to install. Quantum can be installed in a traditionally wired configuration, or use built-in Wi-Fi technology to connect wirelessly to your Raymarine MFD.

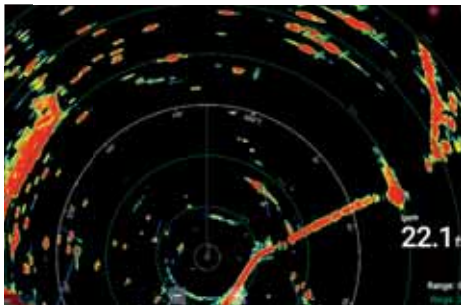
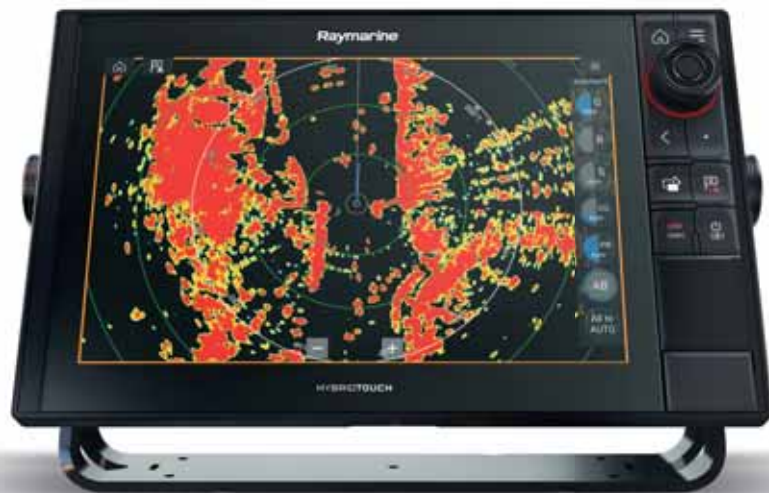


# OPEN ARRAY RADAR

## Magnum Open Arrays

Magnum™ high-performance open array radars bring long-range performance and enhanced small target radar imaging to Raymarine multifunction navigation displays. Employing many of the same radar technologies trusted by the United States Coast Guard, Magnum offers intelligent target tracking and reliable performance, all packaged in a sleek open array pedestal built to withstand the elements.





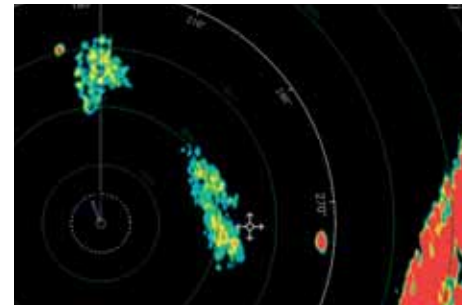
### Long Range Performance

Magnum is available in 4kW or 12kW power output options and with either a four-foot or six-foot antenna array option. Magnum radars offer a maximum range up to 96nm for 12kW models – ideal for blue water vessels – and up to 72nm for 4kW models.



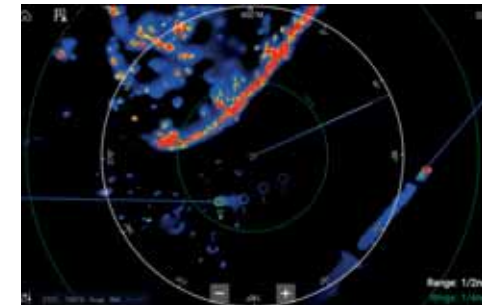
### Choice of the Pros

Magnum radars are built upon the same radar technology Raymarine provides to the United States Coast Guard, so you can trust Magnum to deliver with professional features like beam sharpening technology for enhanced detail and bearing resolution. Combine Magnum with Axiom and take advantage of True Trails target history display and real-time heading updates.



### Find Birds - Find Fish

Building upon Raymarine's proven bird identification radar technology, Magnum's newly advanced Bird Mode feature targets birds with greater clarity up to 10nm away. Locating flocks of birds with Magnum helps anglers find schooling bait fish faster and with less fuel consumption.



### Enhanced Target Awareness

Magnum delivers better situational awareness with fully automatic MARPA target acquisition and tracking. Magnum also makes use of Raymarine's Evolution or AR200 9-axis heading sensor technology to provide real-time, accurate target plots.



# FLIR THERMAL NIGHT VISION CAMERAS

FLIR maritime thermal imaging cameras turn night into day, keeping you safe and secure and letting you boat with confidence. From small boats to superyachts, FLIR offers leading-edge thermal cameras that are rugged, reliable and straightforward to use.

## NEW

### M300 Series

The M300 Series sets a new standard for safe marine navigation and situational awareness. Applying enhanced stabilisation technology to high-performance visible, thermal, or multispectral imaging, M300 Series marine cameras deliver unwavering vision in high-stakes environments.

With options for any marine application, the M300 Series offers outstanding vision in the most gruelling conditions. Three unique sensor combinations on the M300 Series give captains total control over their vision. The M300C captures high definition visible imaging and uses a 30x optical zoom to monitor distant targets. M332 and M364 dedicated thermal cameras capture excellent vision in complete darkness, blinding glare, and light fog. The M364C and M364C-LR combine visible and thermal sensors, leveraging FLIR Colour Thermal Vision™ (CTV) and MSX™ for safer navigation and awareness.



## Safer Navigation

The M300 Series makes nighttime navigation safer and less stressful. FLIR thermal technology gives captains the power to see clearly in total darkness, glaring light, and light fog.

## FLIR Colour Thermal Vision® (CTV)

Exclusive FLIR Colour Thermal Vision blends visible camera details with a thermal image, overlaying vital colour imagery that allows captains to positively identify navigation aids and other vessels within the thermal scene.

## M232

The FLIR M232 marine thermal night vision camera takes affordability and easy integration to a new level. Combining 320x240 thermal resolution, video over IP, and ClearCruise IR technology into a compact housing, the M232 is the perfect addition to any Axiom navigation system.

## Enhanced Awareness

Combine the M232 with a Raymarine Axiom MFD and take advantage of FLIR ClearCruise™ IR, intelligent thermal analytics. ClearCruise IR provides audible and visual alerts when “non-water” objects such as boats, obstacles, or navigation markers are identified in the scene.



M300 Lowlight camera image



M300 Series Thermal image



M300 Series Colour Night Vision





## DOCKSENSE ALERT ASSISTED DOCKING TECHNOLOGY

DockSense Alert™ is the next generation of Raymarine's intelligent docking technology that works on almost any boat. Using FLIR stereo vision camera technology, DockSense Alert detects and alerts the captain as obstacles come near the boat, and instantly notifies you when your boat is drifting into danger. Live video feeds from each camera make it simple to see into blind spots right from the helm.

DockSense Alert works with Raymarine Axiom multifunction displays and renders a simple birds-eye view of the boat and its surroundings. An array of 3D stereo vision

cameras with advanced motion sensors accurately measure the distances to the dock, pilings, and other moored vessels.

Audible and visual cues alert you to excessive closure rates, and help you visualise the effects of internal and external forces like wind, current, propulsion and thrusters.



### Configurable Proximity Alerts

DockSense Alert's adjustable alert zone lets you decide when you want to receive audible and visible cues to warn you of objects in close proximity.



### 3D Stereo Vision Sensors

DockSense Alert uses patented FLIR 3D stereo vision cameras to precisely measure the distance to and height of objects in the camera's field of view.



### Integrated with LightHouse 3

The DockSense Alert App for Axiom gives you a detailed overhead view of the scene, proximity warnings and alerts, plus detailed live views of your boat's blind spots.



DockSense Alert gives captains the confidence to dock in challenging conditions at any dock, in any location. Unlike other docking assistants, DockSense Alert is entirely self-contained. No external beacons or sensors need to be attached to the dock or pilings. Everything you need is built into your boat and works everywhere your boat goes.

**Note:** DockSense Alert is available as a factory-installed option on select new boat brands. Ask your dealer about DockSense Alert for your new boat.





# EVOLUTION AUTOPILOTS

With over 40 years of autopilot research and development, Evolution™ is the pinnacle of Raymarine autopilot technology. Designed for razor-sharp course keeping and steady control, Evolution autopilots require virtually no calibration or complicated setup. We offer a full range of Evolution autopilot systems to fit outboard and inboard fishing boats of all sizes.

Visit [raymarine.eu/evolution](http://raymarine.eu/evolution) to find the right autopilot for your boat or consult your local Raymarine electronics dealer to help you configure the perfect Evolution system.





## Trusted Crew Member

No one wakes up at 4am to go steering. You can rely on Evolution for long runs out to the fishing grounds, and to keep you on track when following trolling patterns on open water. You work the baits, and Evolution can handle the boat. Once you've experienced the convenience of fishing with Evolution, you'll never want to leave the dock again without it.



## Track IQ™ Technology

Exclusive Evolution TrackIQ™ technology delivers best-in-class steer to GPS waypoint tracking. Patented Evolution algorithms and 9-axis gyro stabilisation compensates for the effects of sea conditions and vessel motion, enabling Evolution to make smoother steering commands and keep the vessel on a plotted GPS course with incredible accuracy regardless of boat size.



## Smarter with Hydro-Balance

Evolution Hydro-Balance™ technology is patented software that delivers superior autopilot performance for outboard powered boats with hydraulic steering. Hydro-Balance intelligently compensates for variability in the elasticity of the hydraulic fluid and hoses, corrects for asymmetry in the vessel's steering, and automatically senses torque steer (prop walk) and compensates to ensure a smooth and accurate course, without the need for a rudder feedback sensor.



## Evolution Advantage

Evolution Autopilots make your time on the water more efficient and more enjoyable. Evolution autopilots steer so accurately that they can save fuel and get you to your destination faster. Spend less time chasing the compass and more time looking out for birds, fish, traffic and hazards. Your Evolution autopilot allows you take your hands off the helm to check your lines, grab a bite, or just enjoy the view.

# ACCESSORIES & PERIPHERAL PRODUCTS



## RAY53

### COMPACT VHF RADIO WITH BUILT-IN GPS

Ray53 is small in size, but big on features and performance. Class D Digital Selective Calling gives you critical distress, safety and convenience features while a built-in GPS/GNSS receiver with external aerial connection makes for simple installation.



## RAY90 and RAY91

### MODULAR MULTI-STATION VHF

Raymarine's Ray90 and 91 VHF radios bring multi-station communications to whole new levels of power, performance and flexibility.

Their black-box design hides the transceiver unit out of sight while offering simple operation from their compact handset stations.

Ray90 and 91 support up to 2 wired handsets/speaker stations, plus up to 3 more wireless stations for simple installation and true walk-around convenience.

Ray91 adds a Class B Automatic Identification System receiver for enhanced awareness of surrounding marine traffic on your chartplotter and radar.



## RAY63

### DUAL-STATION VHF RADIO WITH BUILT-IN GPS

Ray63 has all of the capabilities of the Ray53 on a full-sized radio chassis with a larger LCD screen and controls. Ray63 also supports a full-function RayMic wired remote control or up to 2 RayMic wireless control stations.



## RAY73

### DUAL-STATION VHF GPS, AIS, LOUD HAILER

Ray73 is Raymarine's deluxe traditional VHF radio packed with all of the powerful features of the Ray53 and 63, plus a built-in Automatic Identification System (AIS) receiver along with a loud hailer output. Add an optional hailing horn for fog signals and voice communication with on-deck crew.





## AR200

The AR200 is an Augmented Reality Sensor consisting of a GPS/GNSS receiver and Attitude and Heading Reference System (AHRS) sensor. The AR200 provides position, heading, pitch and roll data to compatible Axiom MFDs. When combined with a compatible IP camera the AR200 enables use of the ClearCruise™ Augmented Reality features available on your Axiom MFD.



## AIS4000 AIS Transceiver

The AIS4000 boasts a high definition colour display for quick access to integrated charts, alarms, and tracking. Additional support for wired and wireless networking with shipboard systems make AIS4000 a premier SOLAS and Inland Waterway-certified Class A transceiver.



## AIS350

Raymarine's AIS350 is a receive-only AIS device that allows you to receive and display the AIS data transmissions from nearby vessels.



## AIS650

The AIS650 is a class B AIS transceiver allowing you to transmit your data to other AIS equipped vessels, and receive their data.



## AIS700

The AIS 700 is a Class B AIS transceiver with a built-in antenna splitter that allows the AIS to share an antenna with your VHF marine radio.



## Marine Audio

Raymarine's Axiom multifunction displays powered by LightHouse 3 OS can integrate seamlessly with marine audio systems from Rockford Fosgate, FUSION and JL Audio. Using NMEA2000 networking you can remote control your AV system right from your Axiom display.



## Satellite TV

Our antenna systems automatically track and receive satellite TV signals in almost any conditions - guaranteed quick, clear, reliable access to hundreds of digital channels.

Available with 33 cm, 37 cm, 45 cm and 60 cm dish diameters.



## Marine Cameras

Providing live video for security and augmented reality, Raymarine's CAM210 and CAM220IP network cameras integrate with LightHouse 3. Engineered for the marine environment these HD cameras let you see and capture action on and off the boat.



## Transducers

Raymarine offers a wide range of depth, speed and temperature transducers that work with instruments, multifunction displays and sonar modules. Transducers are available in transom mount, in-hull, or through hull configurations. Transducers are available in plastic composite, bronze or stainless steel to fit practically any boat on the water.



## Wired Remote

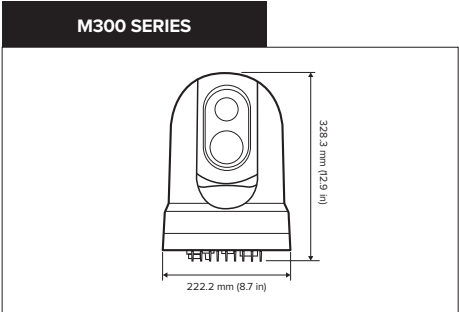
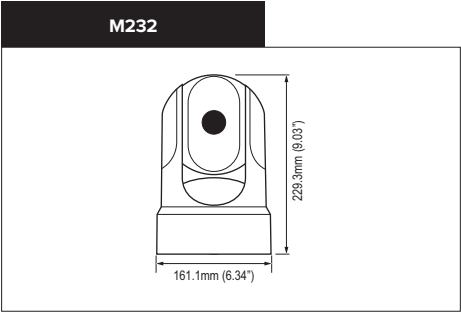
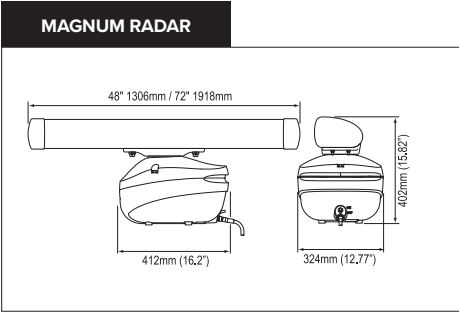
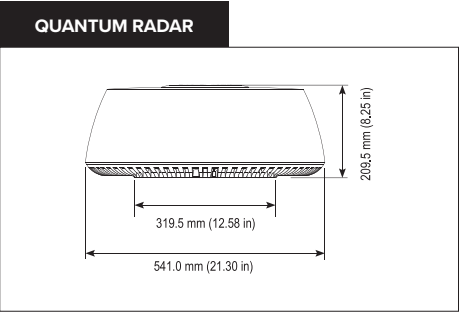
The compact RMK-10 remote keypad works with any LightHouse 3 OS multifunction display and puts control right where you need it. With horizontal or vertical mounting options and a compact footprint it fits just about anywhere above or below decks.

# DIMENSIONS

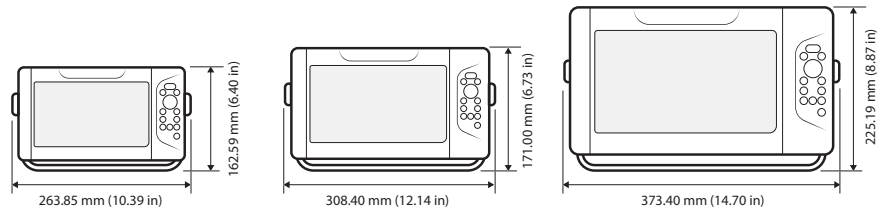
## BASIC PRODUCT

## SIZE DATA

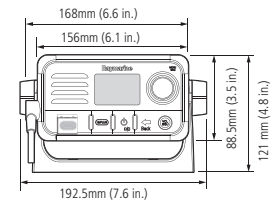
AXIOM, AXIOM PRO, AND AXIOM XL DIMENSIONS																				
	AXIOM 7		AXIOM 9		AXIOM 12		AXIOM PRO 9		AXIOM PRO 12		AXIOM PRO 16		AXIOM XL 16		AXIOM XL 19		AXIOM XL 22		AXIOM XL 24	
	mm	in	mm	in	mm	in	mm	in	mm	in	mm	in	mm	in	mm	in	mm	in	mm	in
A	250.4	9.86	265.03	10.43	314	12.36	299.32	11.78	358	14.1	452	17.8	394.9	15.54	462	18.1	534	21.02	578	22.76
B	133	5.24	157.78	6.21	217	8.54	329.5	12.97	388.5	15.3	–	–	248.22	9.77	289	11.3	326	12.83	387	15.23
C	162.5	6.4	187.8	7.39	226.8	8.93	173.8	6.84	222.8	8.77	258	10.2	9.0	0.35	9.0	0.35	9.0	0.35	9.0	0.35
D	76.4	3.0	76.71	3.02	76.20	3.0	97.9	3.85	96.3	3.79	101.8	4.0	73.96	2.91	73.96	2.91	76	3.0	76	3.0
E	218	8.59	170	6.69	170	7.08	186.2	7.3	246.13	9.69										



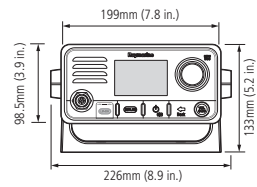
## ELEMENT



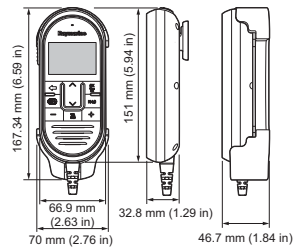
## RAY53



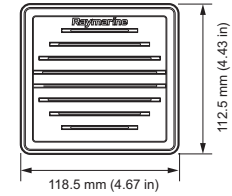
## RAY63/73



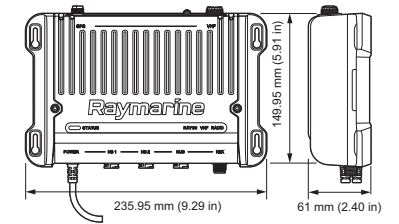
## RAY90/91 HANDSET



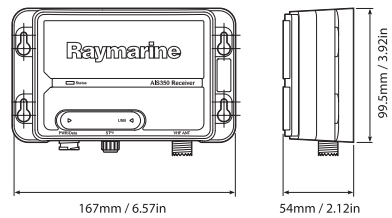
## RAY90/91 SPEAKER



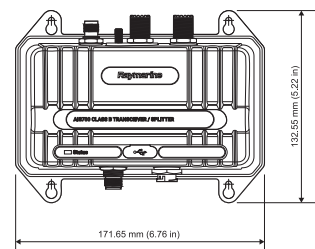
## RAY90/91 BLACK BOX



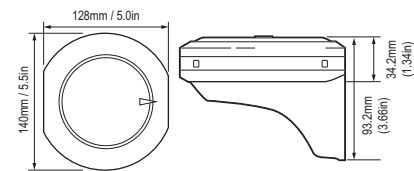
## AIS350/650



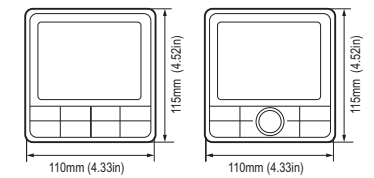
## AIS700



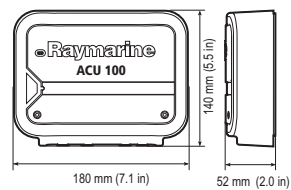
## EV1 / EV2/AR200



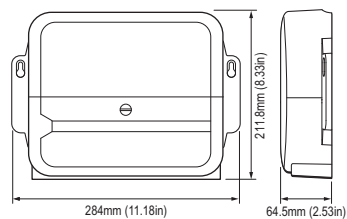
## i70/p70s/p70Rs



## ACU 100/150



## ACU 200/300/400







## Safety Notices

Raymarine products are intended to be used as aids to navigation and must never be used in preference to sound navigational judgement. Their accuracy can be affected by many factors, including environmental conditions, equipment failure or defects, and incorrect installation, handling or use.

Only official government charts and notices to mariners contain all the current information needed for safe navigation, and the captain is responsible for their prudent use. It is the user's responsibility to use official government charts, notices to mariners, caution and proper navigational skill when operating any Raymarine product.

## Content Note

The technical and graphical information contained in this brochure, to the best of our knowledge, was correct as it went to press. However, the Raymarine policy of continuous improvement and updating may change product specifications without prior notice. Therefore, unavoidable differences between the product and this brochure may occur from time to time, for which liability cannot be accepted by Raymarine.

Some images in this brochure have been used for illustration purposes only.

## Export Restrictions

The information contained in this brochure pertains to dual use products controlled for export by the Export Administration Regulations (EAR). Diversion contrary to US law is prohibited. US Department of Commerce authorization is not required prior to export or transfer to foreign persons or parties unless otherwise prohibited.

## Photography

The lifestyle photography used in this brochure is supplied by: Boston Whaler / Jason Arnold / Drew Gregory / Beneteau / Sundeck / Matt Dickens / Faster / Adrian Grey / Tim Dean / George Gozdz

### FLIR Maritime Belgium Bvba

Luxemburgstraat 2,  
2321 Meer,  
Belgium  
T: (+32) (0) 3665 5162

### Raymarine UK Limited

Marine House  
Cartwright Drive, Fareham, PO15 5RJ,  
United Kingdom  
T: (+44) (0)1329 246 700

### FLIR Maritime US Inc.

9 Townsend West  
Nashua NH 03063  
United States of America  
T: (+1) 603-324-7900

### FLIR Maritime Asia Pty Ltd

Suite 1.01, 26 Rodborough Road  
Frenchs Forest, NSW, 2086,  
Australia  
T: (+61) (0) 2 8977 0300

### Raymarine Benelux

Florijnweg 21G,  
6883 JN VELD  
Nederland  
T: (+31) 26 361 4242

### Raymarine Denmark

Centervej 7  
4600 Køge  
Denmark  
T: (+45) 4371 6464

### Raymarine Finland Oy

Suomalaistentie 1-3  
02270 Espoo  
Finland  
T: (+358) 207619937

### Raymarine France

Parc d'Activités des Peupliers  
37 Rue des Peupliers, CS 50007  
92752 Nanterre Cedex - France  
T : (+33) 146497230

### Raymarine Germany GmbH

Borsteler Chaussee 53,  
22453 Hamburg,  
Germany  
T: (+49) 40 237 8080

### Raymarine Italy Srl

Via L. Manara 2,  
20812 Limbiate (MB),  
Italy  
T: (+39) (0)2 99451001

### Raymarine Norway

Stasjonsveien 19  
1580, Rygge,  
Norge  
T: (+47) 69 26 46 00

### Raymarine Sverige AB C/O Flir Systems AB

Antennvägen 6,  
BOX 7376,  
187 66 TÄBY  
T: (+46) 317 633670

# Raymarine®

a brand by 